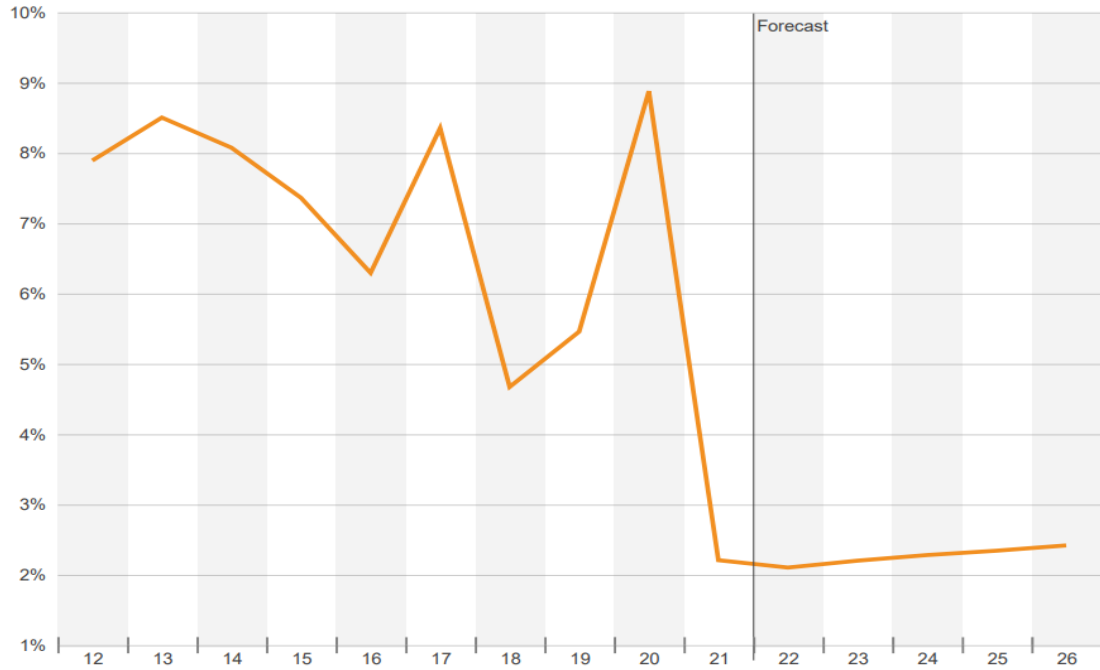


Vacancy Rates - Retail - New Smyrna Beach, FL

Annual				Availability & Inventory	
Historical	Rate	Forecast	Rate		
2012	7.894%	2022 EST	2.105%	Vacant SF	50.4K
2013	8.505%	2023	2.203%	Availability Rate	2.50%
2014	8.077%	2024	2.283%	Available SF	59.7K
2015	7.365%	2025	2.345%	Occupancy Rate	97.90%
2016	6.296%	2026	2.420%	Existing Buildings	338
2017	8.355%				
2018	4.674%				
2019	5.461%				
2020	8.880%				
2021	2.210%				
2022 YTD	2.076%				

Quarterly					
2012-2016	Rate	2017-2022	Rate	Forecast	Rate
2012 Q1	6.486%	2017 Q1	6.443%	2022 Q1 EST	2.083%
2012 Q2	10.108%	2017 Q2	8.117%	2022 Q2	2.087%
2012 Q3	8.213%	2017 Q3	8.218%	2022 Q3	2.092%
2012 Q4	7.894%	2017 Q4	8.355%	2022 Q4	2.105%
2013 Q1	8.428%	2018 Q1	7.598%	2023 Q1	2.121%
2013 Q2	9.056%	2018 Q2	8.770%	2023 Q2	2.152%
2013 Q3	8.563%	2018 Q3	8.075%	2023 Q3	2.178%
2013 Q4	8.505%	2018 Q4	4.674%	2023 Q4	2.203%
2014 Q1	8.265%	2019 Q1	5.102%	2024 Q1	2.227%
2014 Q2	8.386%	2019 Q2	4.933%	2024 Q2	2.247%
2014 Q3	7.966%	2019 Q3	5.798%	2024 Q3	2.265%
2014 Q4	8.077%	2019 Q4	5.461%	2024 Q4	2.283%
2015 Q1	8.031%	2020 Q1	5.778%	2025 Q1	2.298%
2015 Q2	7.775%	2020 Q2	6.177%	2025 Q2	2.314%
2015 Q3	7.409%	2020 Q3	7.129%	2025 Q3	2.329%
2015 Q4	7.365%	2020 Q4	8.880%	2025 Q4	2.345%
2016 Q1	7.289%	2021 Q1	6.757%	2026 Q1	2.361%
2016 Q2	7.756%	2021 Q2	6.200%	2026 Q2	2.379%
2016 Q3	7.588%	2021 Q3	2.429%	2026 Q3	2.399%
2016 Q4	6.296%	2021 Q4	2.210%	2026 Q4	2.420%
		2022 Q1 QTD	2.076%	2027 Q1	2.441%

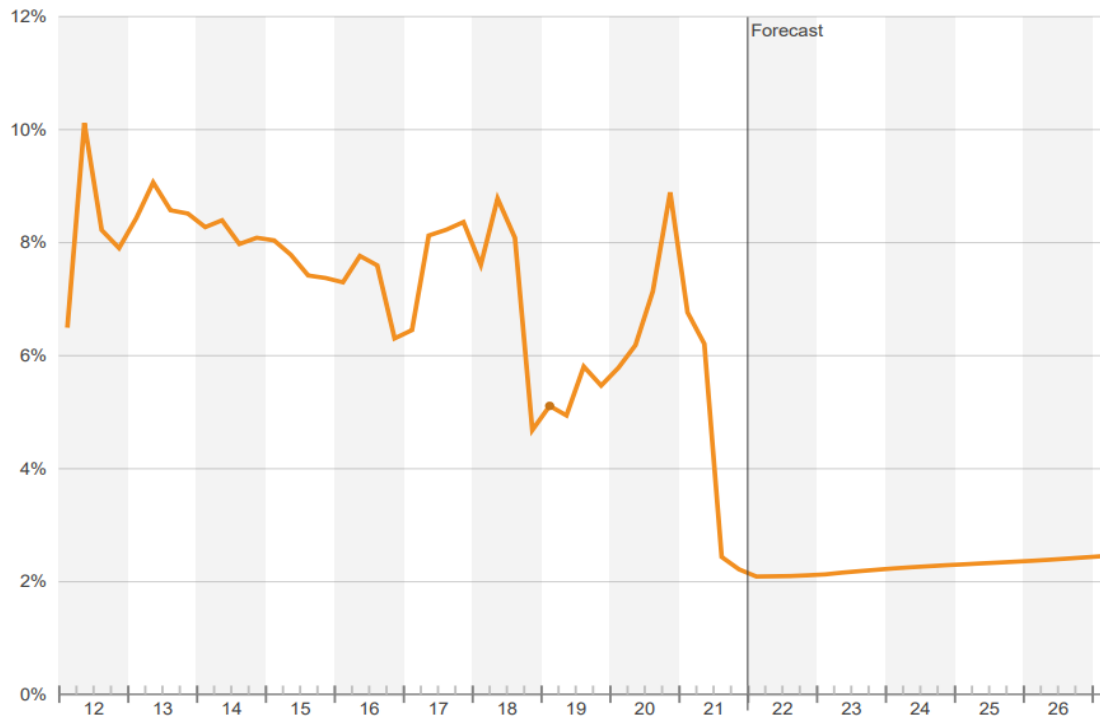
Annual Vacancy Rates



© 2022 CoStar Realty Information Inc.

2/1/2022

Quarterly Vacancy Rates



© 2022 CoStar Realty Information Inc.

2/1/2022